

# SOURCING SERVICES

JSL Global aims to provide efficient, strategic, and value-added services to its customers and suppliers in sourcing raw materials and inputs for manufacturing of stainless steel products. We intend to leverage and build on a strong supply chain with players within the stainless steel sector by structuring appropriate solutions. We are strongly positioned in global markets and bring the requisite expertise in dealing and trading of raw materials consumed in stainless steel manufacturing.

## Sourcing of Products

**Stainless steel** is best known for its excellent resistance to corrosion. Hence, the **metals** used for the manufacturing of stainless steel have special characteristics which prevent it from the surrounding **environmental** changes.

We are well-equipped to deal with the market scenario and have expertise in trading of raw material which is consumed in the manufacturing process of stainless steel production. In order to source the raw materials, we use our global presence, market knowledge and logistics capabilities to optimize supply chain. Our service is extended to customers around the world (Europe, USA, Australia, South-East Asia, Middle East, Far East, etc).

A team with strong technical skills, market knowledge and deep understanding of physical flows, we respond rapidly to the changing market dynamics and customer needs.

### Typical chemical compositions that we deal in

- Nickel Pure (LME / Non-LME Grade): Ni 99.90% min, Impurities (In traces)
- Ferro Nickel: Ni 15% to 30%, C 3% Max, Co 1/40th of Ni, S 0.05% Max, P 0.03% Max
- Nickel Pig Iron: Ni 10% to 13%, C 3% Max, Co 1/40th of Ni, S 0.05% Max, P 0.03% Max
- Stainless Steel Scrap 304 Grade: Ni 8%, Cr 18%, Cu 0.5% max, Pb 0.025% max, Sn 0.025% max, Fe bal
- Stainless Steel Scrap 316 Grade: Ni 10%, Cr 16%, Mo 2%, Cu 0.5% max, Pb 0.025% max, Sn 0.025% max, Fe bal
- Hard Coking Coal: TM(ARB) 10.5%, IM(ADB) 1.10%, Ash(ADB) 9.50%, VM(ADB) 22%, S(ADB) 0.51%, P(ADB) 0.04%, CSN 8, CSR 68, Vitrinite 63%, MMR 1.24, Max Fluidity(ddpm) 800
- Semi Hard Coking Coal: TM(ARB) 8%, IM(ADB) 2%, Ash(ADB) 9%, VM(ADB) 33.5%, S(ADB) 0.60%, P(ADB) 0.02%, CSN 8.5, CSR 60, Vitrinite 77%, MMR 0.93, Max Fluidity(ddpm) 1200
- Semi Soft Coking Coal: TM(ARB) 10%, IM(ADB) 2.5%, Ash(ADB) 9%, VM(ADB) 30%, S(ADB) 0.055%, P(ADB) 0.02%, CSN 6, Vitrinite 70%, MMR 0.77, Max Fluidity(ddpm) 150
- MS Scrap: we are dealing in Shredded Steel Scrap in containers conforming to ISRI 211, 4A/4C Bundles, Loose Busheling, MS Turning etc.
- Calcined Lime: CaO 88% Min, Silica 3% max, LOI 3% Max, S 0.10% max, Size 10-75 MM

## Nickel

Nickel, a chemical element, is one of the key input raw materials for the manufacturing of stainless steel.

We source Nickel from a variety of raw materials, like Pure Nickel, Ferro Nickel, Nickel Pig Iron and Stainless-Steel Scrap.

Nickel helps in preventing corrosion by building an oxide layer on its surface. It is also ductile, which allows stainless steel to be shaped into wires, tubes and rods etc.





## Ferro Nickel

Ferro Nickel is an alloy which is used after the impurities of silicon, carbon and phosphorous are removed from it. It is marginally discounted to Pure Nickel.

## Stainless Steel Scrap

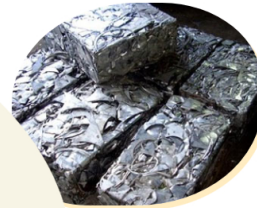
Stainless Steel scrap is one of the most inexpensive substitutes for Nickel in the manufacturing process of stainless steel. It is obtained either from the demolition of old applications or fresh, during the manufacturing of stainless steel products.

The two types of scrap - **reclaimed scrap (old scrap)** and **industrial scrap (new scrap)**. Reclaimed scrap (25% usage) includes industrial equipment, tanks, washing machines and refrigerators that have reached the end of their service life.

Industrial scrap (35% usage) includes industrial returns or production off cuts from manufacturing by industrial engineering and fabrication sources.

The use of SS scrap reduces use of mined minerals and is environment friendly. A specialized expertise and sophisticated technology aids in recycling and separation for remelting, chemical analysis and storage.

The SS scrap contains valuable raw elements including chromium, nickel and molybdenum that are gathered, processed and reused in the stainless steel production process. Mills are one of the biggest beneficiaries of SS scrap, as it is used in the furnaces.



## Coking Coal

Coke is made by destructive distillation of a blend of selected Bituminous coals (called Coking coal or Metallurgical coal) in special high temperature ovens in the absence of oxygen until a large part of the volatile matter is driven off. The resulting product, COKE, consists principally of Carbon. It is an important raw material for manufacturing process through Blast Furnace route.

Coke is primarily used to smelt iron ore and other iron bearing materials in blast furnaces, acting both as a source of heat and as a chemical reducing agent to produce pig iron or hot metal.

Coke also serves as a structural material to support the deep bed of coke/iron oxide/limestone that makes up much of the furnace volume. It is in this last role that its properties are crucial. It is important that it does not degrade (e.g. break up into small particles) during its descent through the oxidizing hot gases passing through the stock region of the furnace.

We are dealing sourcing of coking coal available in three varieties - Hard, Semi-Hard and Semi-Soft. Thermal Coal is also sourced and used for generation of Power through coal fired power plants.

## Lime

Lime, in stainless steel-making process, is used as a purifier to eliminate impurities. Elements like phosphorous and sulphur can severely damage the production process, as they prevent ductility and make stainless steel more fragile.

The calcium introduced in lime has a modifying effect on the manufacturing process. An AOD converter is used for refining, which in turn helps in desulphurization, dephosphorization and slag formation (protection from elements like Hydrogen and Nitrogen).



## MS Scrap

MS Scrap (Fe) is a base metal in production of stainless steel.

**JSL GLOBAL**  
COMMODITIES

[SOURCING SERVICES](#)

[MARKETING SERVICES](#)

[CONTACT US](#)

© Copyright 2019, all rights reserved with JSL Global Commodities Pte. Ltd.

Designed & Developed By : 

